



TERMINALS

Allcargo Terminals Limited

CIN: L60300MH2019PLC320697

Regd. Office: 4th Floor, A Wing, Allcargo House, CST Road, Kalina, Santacruz (E), Vidyanaagari,
Mumbai – 400 098

Website: www.allcargoterminals.com | **Email:** investor.relations@allcargoterminals.com

Tel.: +91 22 66798110

Environment Policy

Commitment

Drawing our inspiration and guidance from our core value – *Care for Environment and Society*, Allcargo Terminals Limited (“ATL” / the “Company”) has always been committed to protecting the environment and reducing our impact on it. For us, environmental conservation is not just a regulatory norm, rather it informs our approach to business and working. We are committed to high standards of ethics, integrity, and sustainability to meet the environmental goals of ethical and fair business practices, by integrating various environmental considerations such as GHG emissions, energy management, and environmental friendliness of products and services.

This document entails ATL approach towards Environmental aspects and acts as a guideline to manage the related impact and risk. This Policy will help us develop better environmental practices while conducting business and create value for relevant stakeholders.

Objectives of the policy

This policy conveys ATL’s approach to integrate environmental aspects in our business processes, as well as identify and manage environment impacts and aspects. The aim of this policy is to:

- Strengthen ATL’s environment program by setting up a robust governance mechanism to manage its impact on the environment.
- Engage with all relevant stakeholders to identify, categorize and manage our impact on them and their expectations from us on a regular basis.
- Act ethically and transparently in compliance with fulfilling all applicable statutory laws and regulations.
- Develop effective and operative mechanisms to monitor and report on environment performance on a continuous basis.

Scope and Applicability

This policy is applicable to all of ATL business operations, facilities, offices, branches, and warehouses in which the businesses have an operational and/or financial control. Further, it is communicated to all stakeholders in their local language and in a manner that is understood by all.

Policy Statements

The environment policy of ATL guides the effort to manage its environmental impact and ensure continuous improvement in environmental performance. ATL endeavors to continually improve our environment management system and enhance its performance, with a commitment to the following:

Environmental

- Identify environmental issues, assess their impact on our business, and set goals, targets, priorities, and action plan to mitigate the impact.
- Align systems to applicable local and national guidelines to measure and monitor our environmental performance.

- Ensure that ATL contributes to the circular economy through judicious use of natural resources, reusing and recycling materials wherever appropriate, regulating the treatment and disposal of waste, and reducing and preventing pollution wherever possible.
- Measure and monitor various environmental parameters while ensuring alignment to our environment goals and targets.
- Promote, advocate, and effectively communicate environmental awareness/ practices at all levels in the organization, and among third party contractors and various other stakeholders.

Training

- Empowering employees and relevant stakeholders, with education and training to enable them to actively participate and contribute to the implementation of the environment policy.

Compliance

- Fulfill all applicable legal requirements, its compliance obligations, and other requirements.
- Ensure the accessibility of information and of essential resources, by regular monitoring and reviewing the performance against the set Environment objectives, and targets.

We shall continually improve the suitability, adequacy, and effectiveness of the environmental management system to:

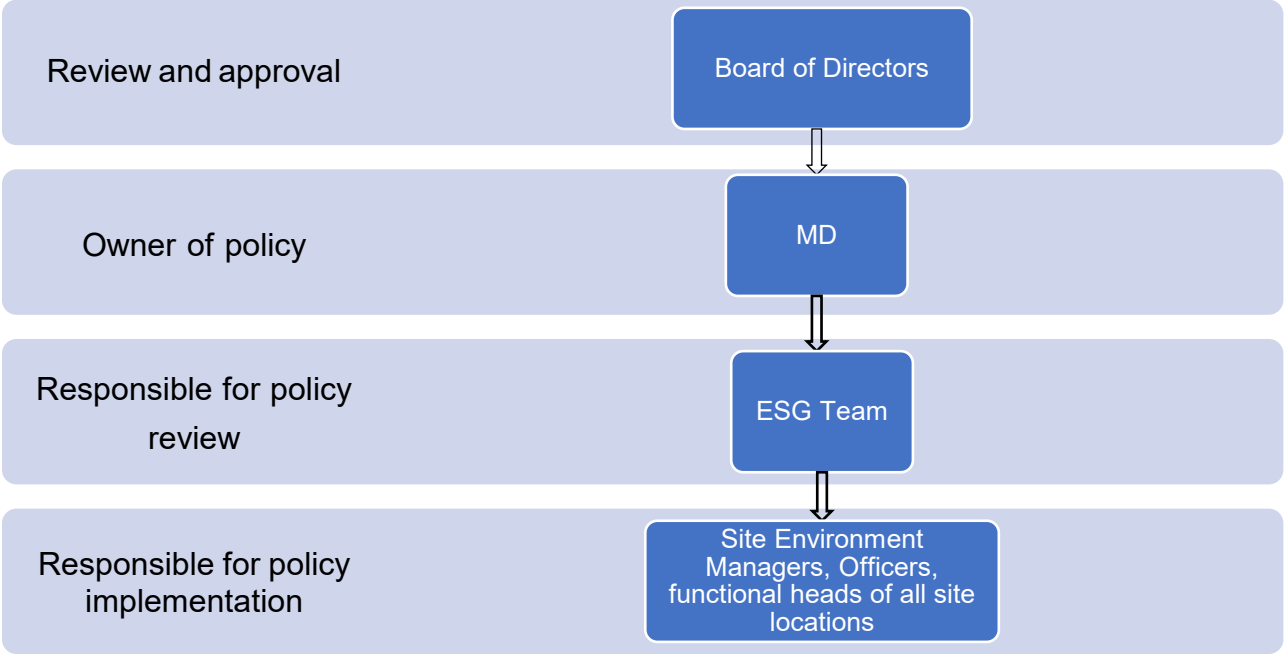
- Enhance environmental performance.
- Promote a culture that supports an environment management system.
- Promote the participation of employees in implementing actions for the consistent improvement of the environment management system.
- Communicate the relevant results of continual improvement to employees, and, where they exist, employee's representatives.
- Maintain and retain documented information as evidence of continuous improvement.

Implementation

For the effective implementation of the environment policy we will:

- Follow the plan-do-check-analysis (PDCA) approach and set environmental objectives, goals, and targets.
- Develop, implement, manage, and monitor standard operating procedures, systems, and processes, and achieve relevant compliance as per industry standards and regulatory requirements.
- Commit to conduct regular audit of consumption of resources and identify opportunities and ways to reduce consumption of material and water and minimize waste through effective operations.
- Commit to review the environment policy and environment management plan periodically.
- Create awareness on environmental practices and communicate our commitment and performance to our employees and relevant stakeholders periodically.

Formulate a robust governance structure to follow the environment policy as follows:



Version	Effective Date	Description of changes
Version 1.0	5 th July 2023	Adoption of Policy at the Board Meeting held on 5 th July 2023